

The Oral Health Environment

- Oral Mucosa
- Teeth
- Attached Gingiva
- Bone
- Muscle and Glandular Tissue
- Salivary Glands/ Ducts.....and much more

AADE17

Dental Diseases- Some Examples

- Dental Caries (Cavities)
- Periodontal Disease (Supporting Structures)
- Oral Cancer and Gingival Hyperplasia
- Oral Manifestations of Systemic Disease
- Candidiasis
- Glossodynia

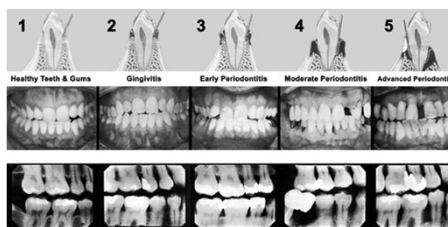
AADE17

Dental Issues and Diabetics

- Periodontal Disease
- Oral Infections
- Dry Mouth
- Change in Taste
- Slow Healing

AADE17

Stages of Periodontal Disease



AADE17

Periodontal Disease - Facts

- Begins with Gingivitis (Reversible)
- Chronic State of Inflammation
- Supporting Fibers and Bone are Weakened
- Pockets Are Formed 3-4 mm Initially
- Gums "Recede" and Sensitivity May Occur
- Gums May Bleed When Brushing

AADE17

Gingivitis



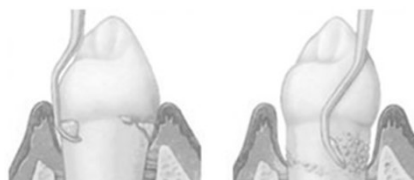
AADE17

Periodontal Disease - Definition

- “A chronic gram-negative infection which may result in severe inflammation with potential vascular dissemination of micro-organisms and their products throughout the body”

AADE17

Steps to Periodontal Health



Scaling

Planing

AADE17

Bone Loss=Mobile Teeth



AADE17

Periodontal Disease- Special Facts

- Happens in Stages
- Visible Signs and Symptoms
 - Gums Bleed
 - Teeth Appear Longer
 - Teeth May Become Mobile
 - “Bad Breath” or Taste May Occur
 - Pockets Deepen to 5-7 mm
 - Teeth Are Sensitive When Chewing

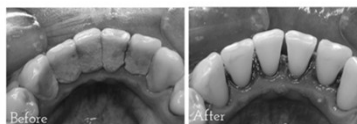
AADE17

Tooth Mobility Plus Severe Bone Loss



AADE17

More Than a “Cleaning”



Scaling and Root Planing

AADE17

What is Scaling and Root Planing?

- Scaling and root planing is a careful cleaning of the root surfaces to remove plaque and calculus [tartar] from deep **periodontal** pockets and to smooth the tooth root to remove bacterial toxins

AADE17

Why Is This Important to Diabetics?

- Mild Periodontal Disease = Blood Stream Bacteria and Immune System Issues
- Can Happen in “Bursts”
- Oral Cavity Tends To Be Overlooked
- Hemoglobin A1c Levels Unstable

AADE17

Dental Diabetic Landscape



AADE17

Treatment Considerations for Diabetics

- Case Control Study Revealed:
 - Prevalence of Periodontal Disease was 92.6% in Diabetics (83% of Non-Diabetics)
 - Dental Caries Incidence was Lower in Diabetics
 - Scaling and Root Planing Benefits

AADE17

Study Results

- “Statistically Significant Association” between periodontal intervention and lower health care costs among newly diagnosed diabetics
- Periodontal intervention resulted in \$1,799 average reduction in total health care costs over a two year period

AADE17

First Dental Visit- 12 Months



AADE17

What Role Dentists Can Play

- Exam and Periodontal “Charting”
- Sequential Deep Cleaning (Scaling and Root Planing)
- Frequent Cleanings and Maintenance
- Replacement of Missing Teeth Upon Sound Bone Structure

AADE17

Value of Dental Office Involvement

SCREENING FOR CHRONIC DISEASES IN DENTAL OFFICES COULD REDUCE U.S. HEALTH CARE COSTS BY ...



AADE17

Beginning a Dental Collaboration

- Adding Oral Health Category to Electronic Medical Record
- Reaching out to a General Dentistry Office
- Arranging a Meeting to Discuss Screening and Bi-Directional Referrals
- Tracking Patient Compliance and Self Management Goals

AADE17

Dental Office Collaboration con't

- Staff Inservices for Mutual Education
- Case Management for Treatment Completion
- Periodontal Maintenance Phase Tracking
- Community Education for Potential Patients
- Involve Additional Groups for Broader “Reach”

AADE17

Thank you

- Questions and Comments:



groverj@ada.org

AADE17